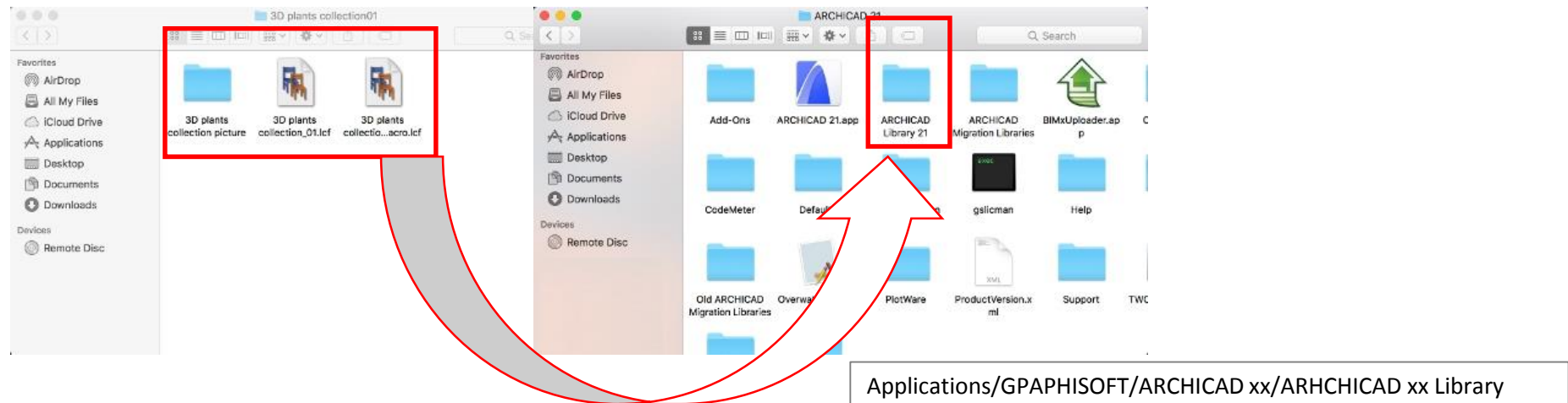


How to import files to Archicad library

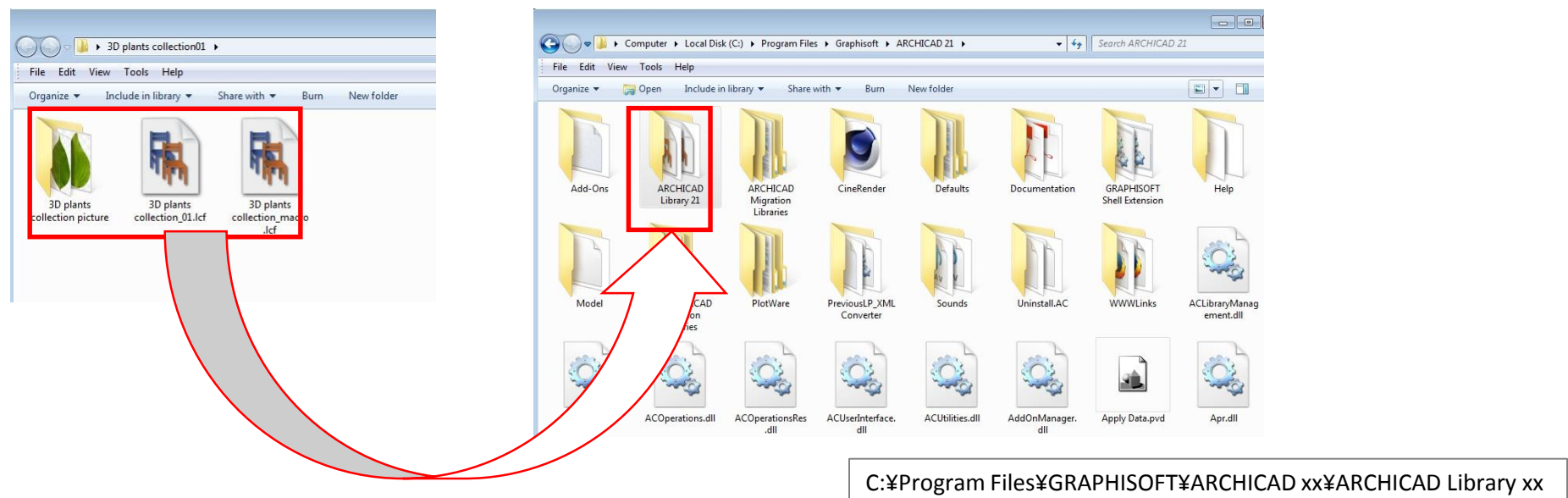
Decompress the download file.

After decompressing, copy one folder and two .lcf files into Archicad Library.

Mac OS



Windows



Plant data settings

You can add a character to an inside of the tree.

You can draw a trunk shape in an inside of the tree.

You can set a size and font of the 2D letter.

You can fill in an inside of the tree inside with white color.

If you put a value, you can tilt the tree and rotate the tree horizontally.

You can change a tree drawing in 2D.

You can select a shape from 3 or 4 types. If you select "AUTO", a tree shape will be automatically selected according to its height.

